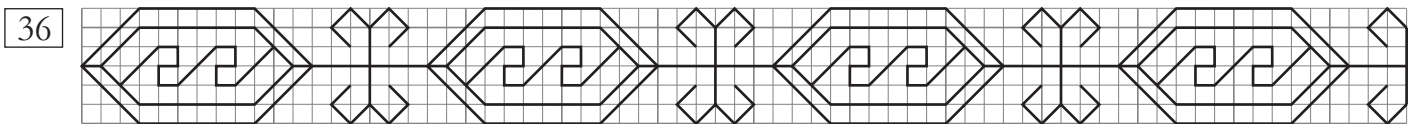
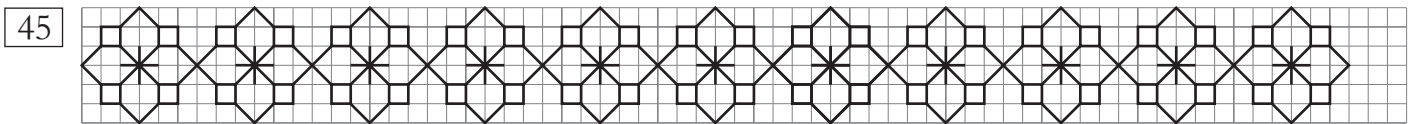
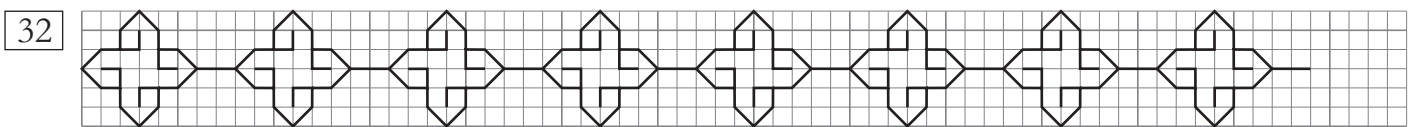
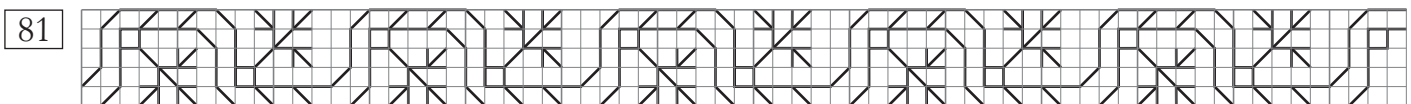
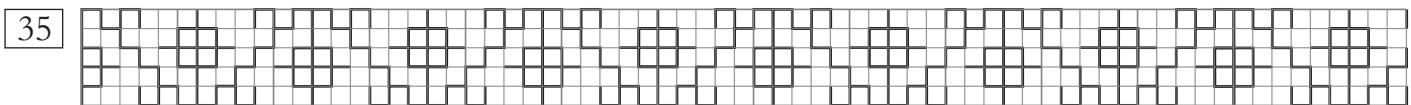
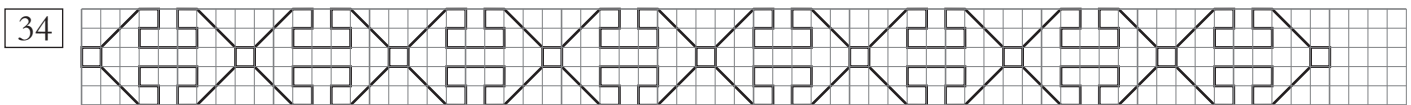
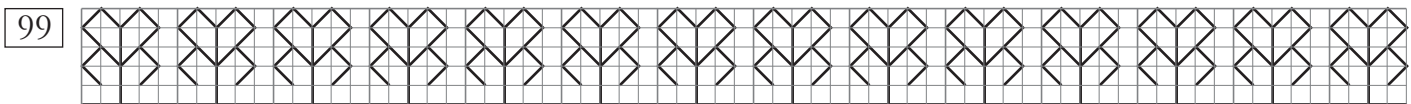
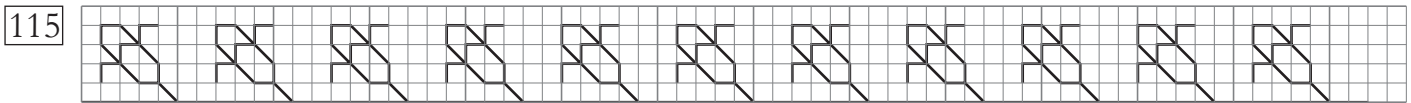
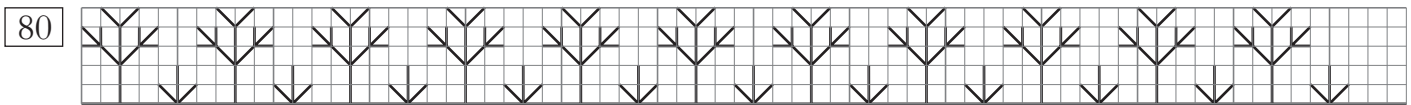
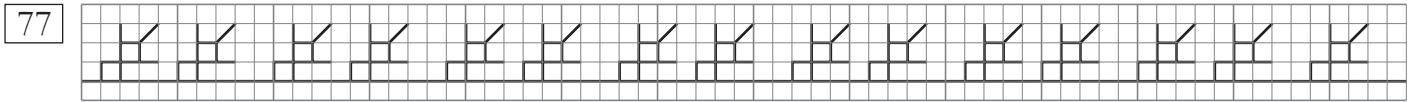
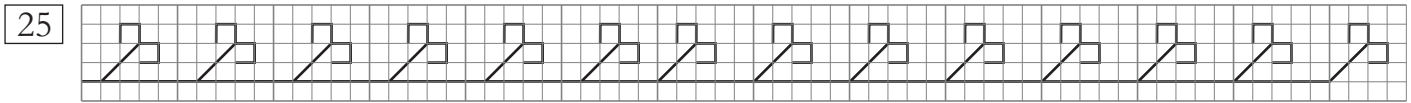
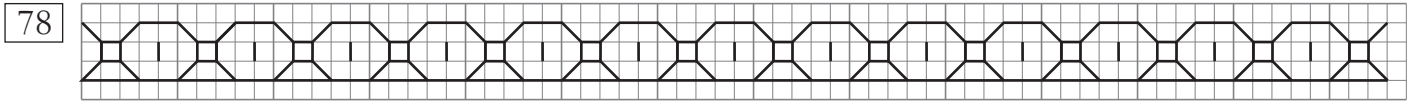
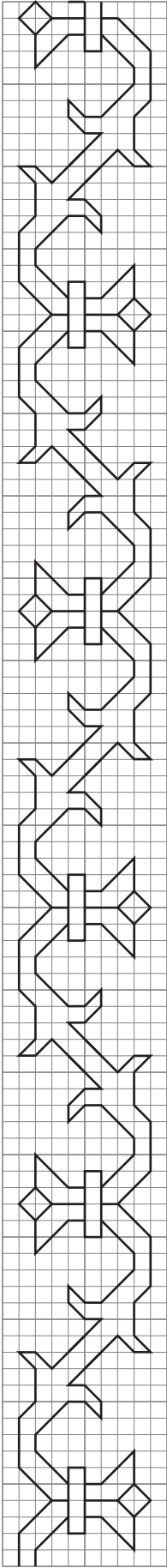
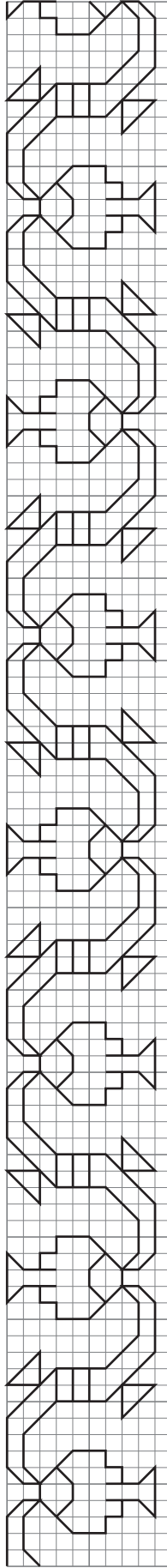


Blackwork patterns from a 16th c. Italian Sampler  
(Victoria & Albert Museum, London, T.14-1931)

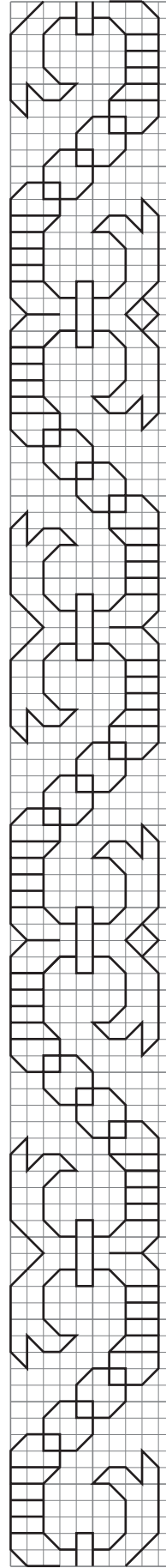




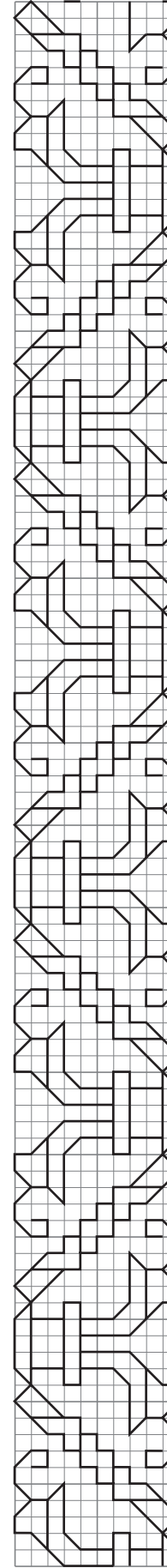
11



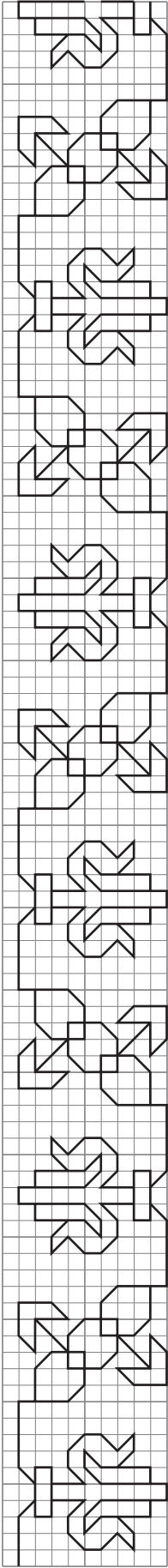
10



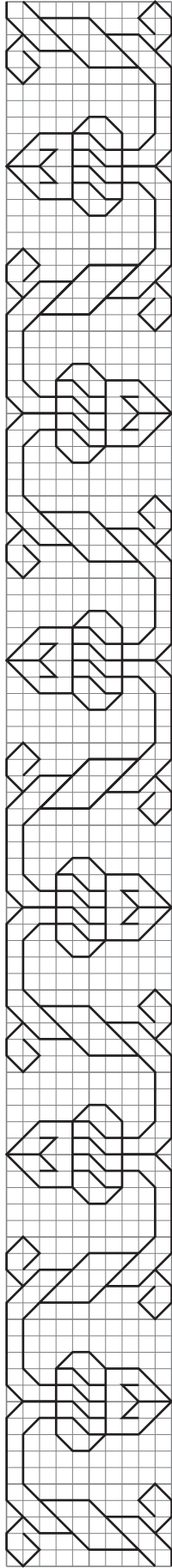
93



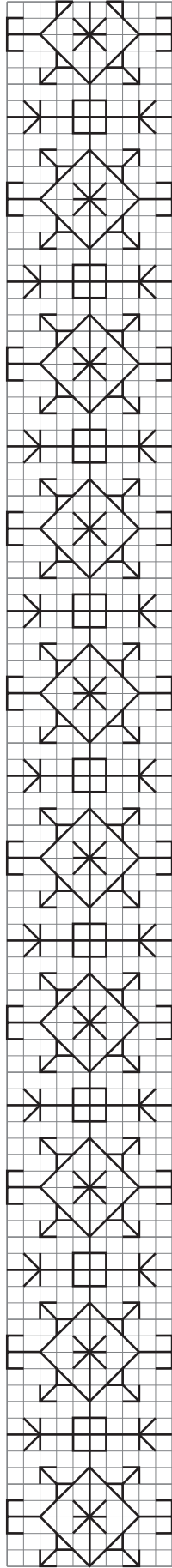
39



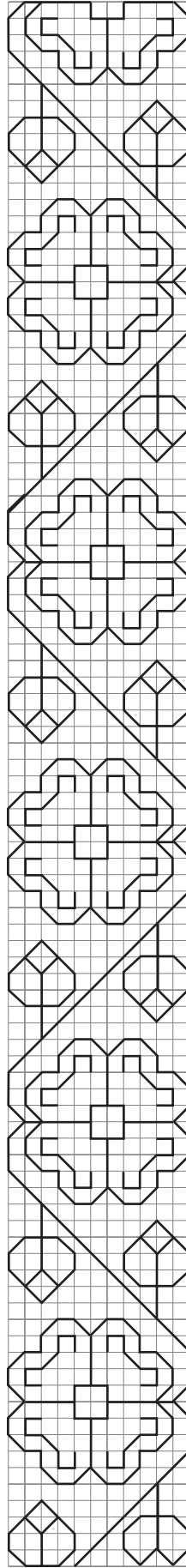
40



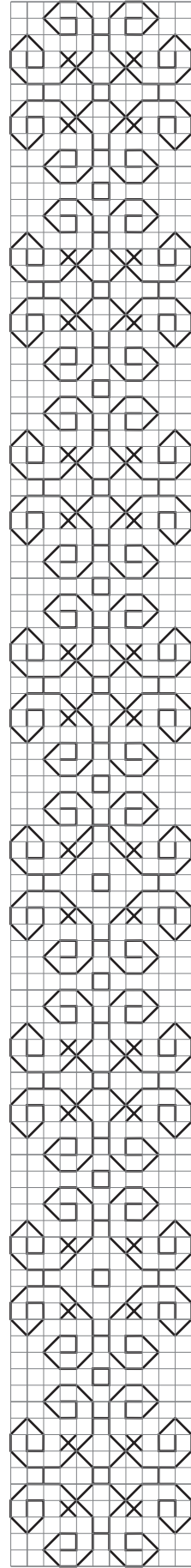
103



79

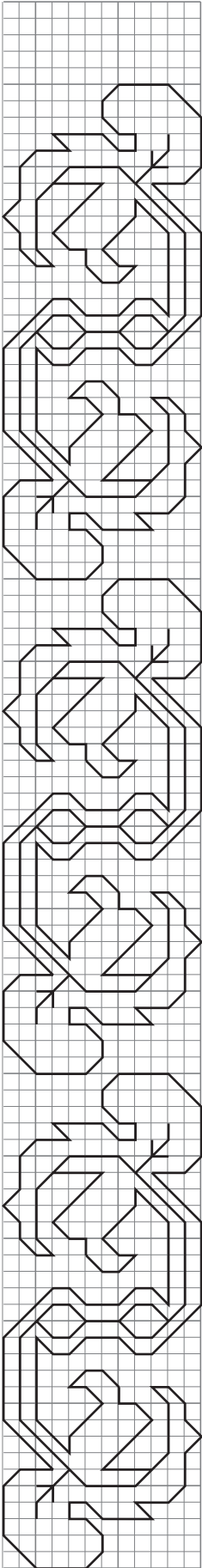


51

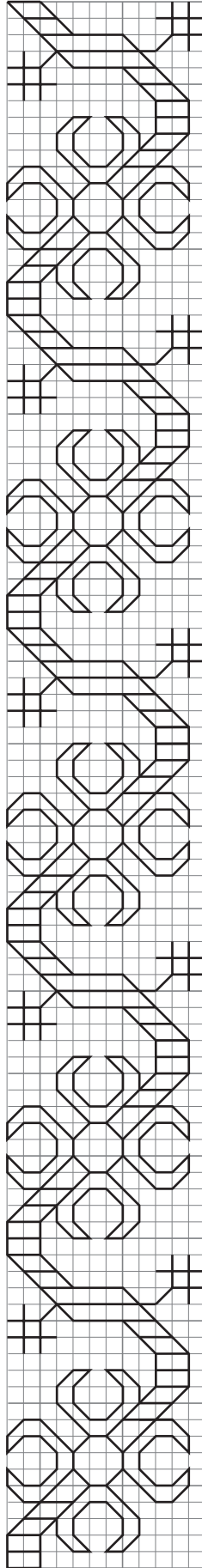


6

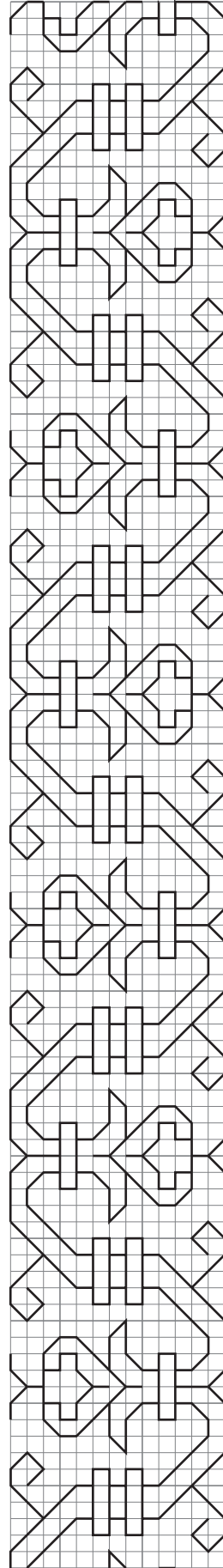
© 2010 by Darbie Marlin. Permission to copy is granted for individual or educational purposes only.  
Educational distribution: please retain copyright notice.  
[www.dragonlore.net](http://www.dragonlore.net)



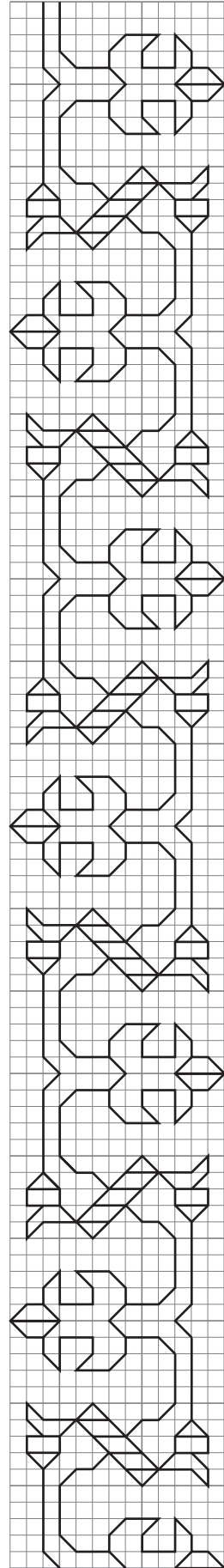
44



86

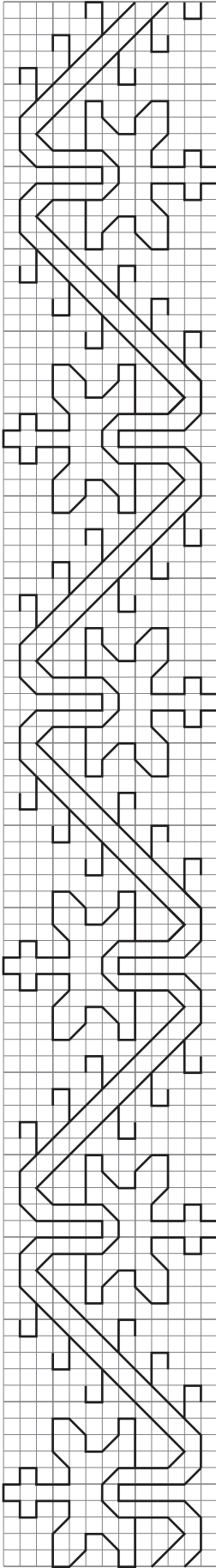


104

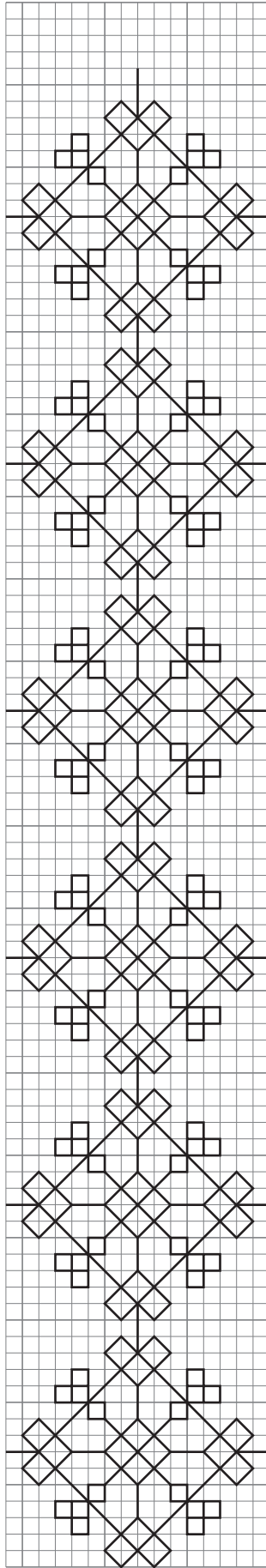


47

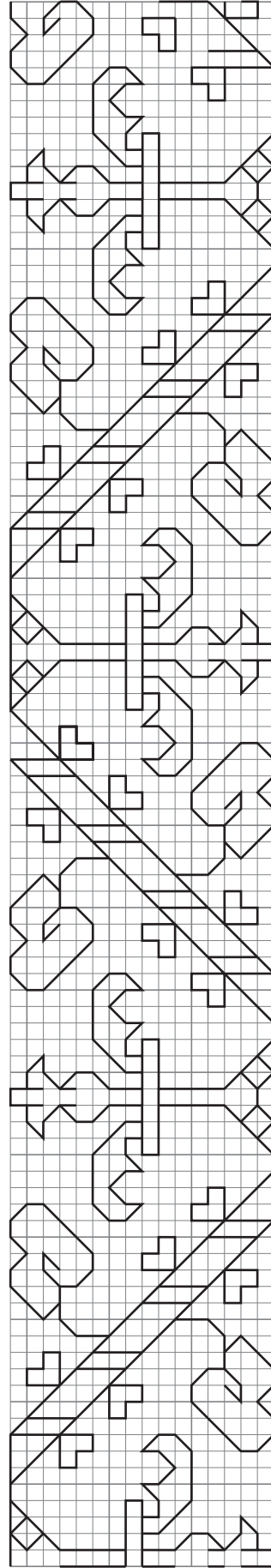
© 2010 by Darbie Marlin. Permission to copy is granted for individual or educational purposes only.  
Educational distribution: please retain copyright notice.  
[www.dragonlore.net](http://www.dragonlore.net)



85



61



66